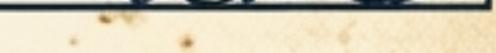
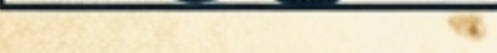
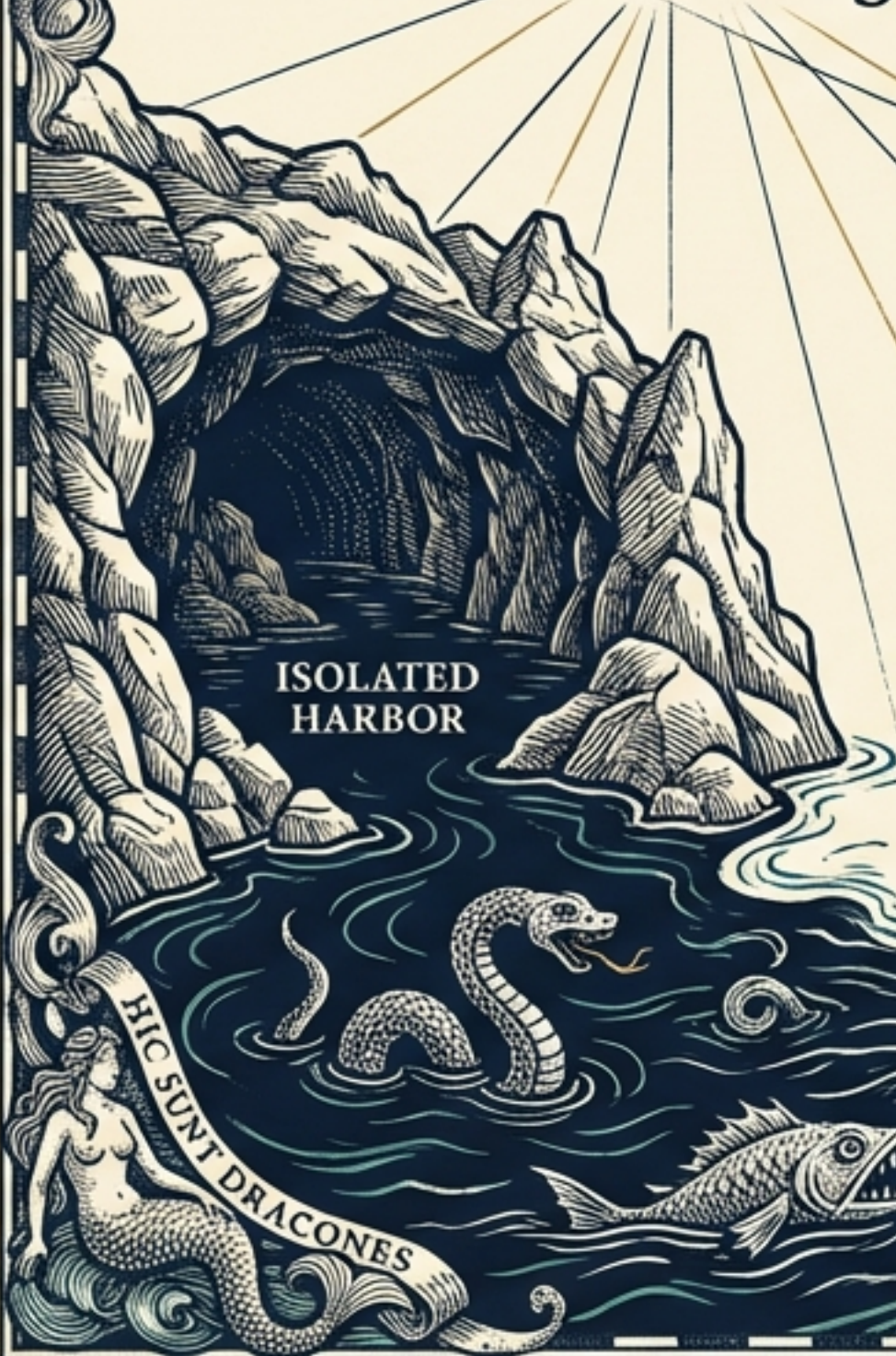


# CHARTING THE WIDER VILLAGE

*A Navigational Guide to Family, Friends, and Support for Neurodivergent Families*

Survival Logbook & Navigational Chart



# The Danger of the Isolated Harbor



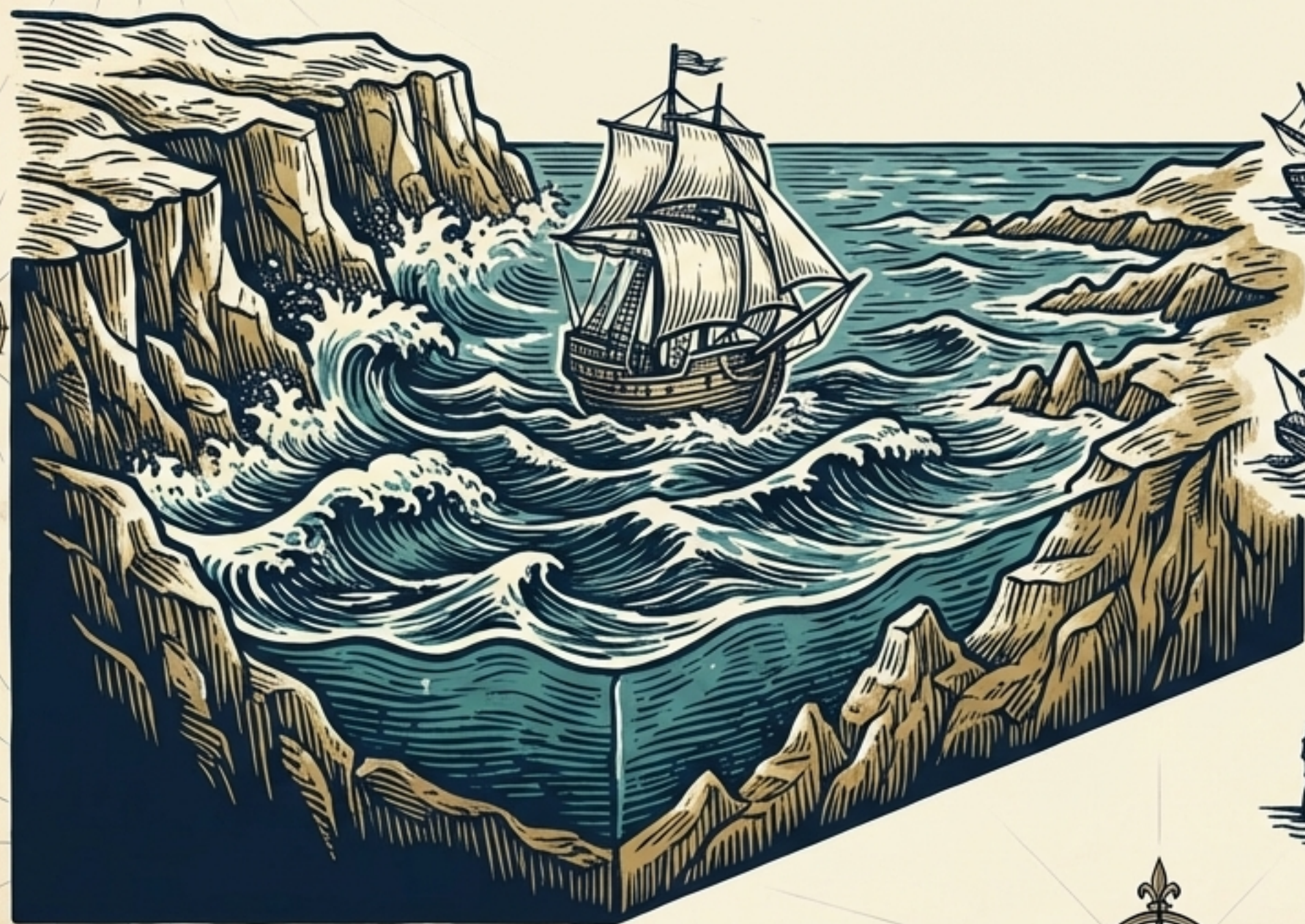
The early days of a diagnosis require a protective harbor to weather the storm. But no island can sustain itself forever. Isolation is not just lonely; it is a biological stressor.

## The Captain's Imperative:

The neurodivergent parenting voyage is a marathon requiring a crew. The village is a survival necessity, not a luxury.

# Navigating the Grandparent Gap

Why extended family struggles to understand your charts.



**Reef 1: Outdated Philosophies.**  
You study nervous system regulation. They operate on spare the rod and viewing behavior as a choice.



**Reef 2: Protective Grief.**  
Acknowledging a diagnosis requires grieving the perfect neurotypical grandchild they imagined. Denial is often rooted in sadness, not malice.



**Reef 3: Misinterpretation.**  
They view demand avoidance or sensory meltdowns as spoiling or a lack of discipline.





# The Diplomatic Dispatch

Do not assume extended family will intuitively understand. Issue a formal, united communication setting the baseline for reality using the Sandwich Method.



## Step 1: Affirmation of Love.

We know how much you love her and want a close relationship. We want that too.



## Step 2: Delivery of Hard Facts.

She runs on a different operating system. The crashes you see are not bad behavior; she is overheating from incompatible inputs.



## Step 3: Specific Call to Action.

We are asking for your help in a few specific ways that science and our therapists recommend.

# Understanding the Neuro-Vessels



**ADHD**  
(The Clipper Ship)  
Ferrari engine, bicycle brakes. Impulse, not willpower. Punishing distraction is like punishing a sneeze.

**Autism**  
(The Submarine)  
High-sensitivity sonar. Retreating is protection from physical sensory pain, not anti-social behavior.



**PDA**  
(The Flare Ship)  
Threat-detection system on overdrive. Everyday demands trigger a fight-or-flight panic response.

**ODD**  
(The River Barge)  
Seeking safety through control. Arguments are a sign of distress. De-escalation works; authoritarianism acts like gasoline on a fire.



# Specific Directives for the Family Crew



## **Don't Demand Affection.**

We teach body autonomy. Forcing hugs triggers sensory over-responsivity. High-fives or waves are perfect.



**Trust Our No.** If we say we must leave early, trust us. We are reading subtle stress signals to prevent a meltdown. We are proactive, not overprotective.



**Abandon Traditional Discipline.** No timeouts or spanking. We use specialized, collaborative problem-solving. We need your support, not conflicting strategies.



**Be Curious, Not Critical.** If behavior confuses you, ask us privately: What was happening for her there? Don't correct her in the moment.

# Grandparents as Allies



Small Talk Swamp



**Parallel Play:** Sitting near the child and engaging in the same activity without demanding constant eye contact is a profound form of love.



Eye Contact Cave

## Handling the Un-Hug:

Refusal isn't rejection; her skin might literally hurt today.



Create an alternative connection ritual: a secret handshake, blowing kisses, or a special wave.

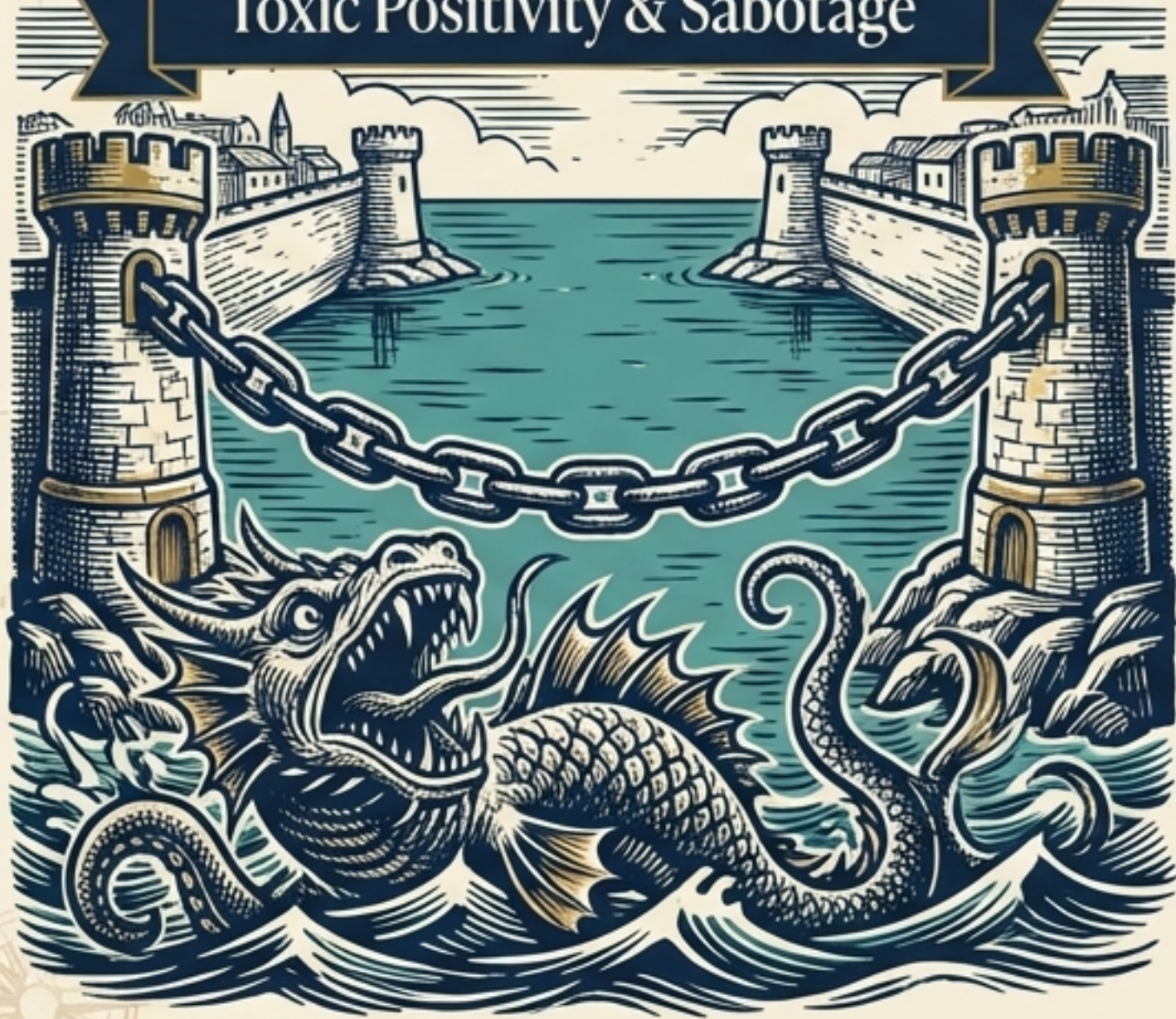
## The Golden Ticket (Special Interests):

Bypass neurotypical small talk. If the child loves elevators, the grandparent who as about elevators becomes the favorite.



# Guarding the Harbor Gates

## Toxic Positivity & Sabotage



Sometimes, despite education, extended family refuses to respect boundaries. They may secretly feed allergens, mock stimming, or undermine authority.

### The Survival Protocol

The mental health of the child and co-parents takes precedence over extended family feelings. You cannot navigate a storm if your team is sabotaging the course.

### 🧭 Action Steps:

- Supervised visits
- Moving gatherings to neutral territory
- Pausing contact

# Competing Access Needs (Crossing Currents)



**The Reality:** When two neurodivergent people's accommodation requirements directly contradict. This isn't a failure of compromise; it's a structural reality.

- Common Collisions:**
- **Auditory:** Sensory-seeking child (needs loud noise) vs. Auditory-sensitive parent (noise causes pain).
  - **Social Energy:** ADHD child (needs constant body-doubling) vs. Autistic parent (needs solitude to recover).

**ND Parent Note:** No one's needs are extra. Solving for both nervous systems is required.

# Traffic Control for Competing Needs

## Time-Sharing Spaces:

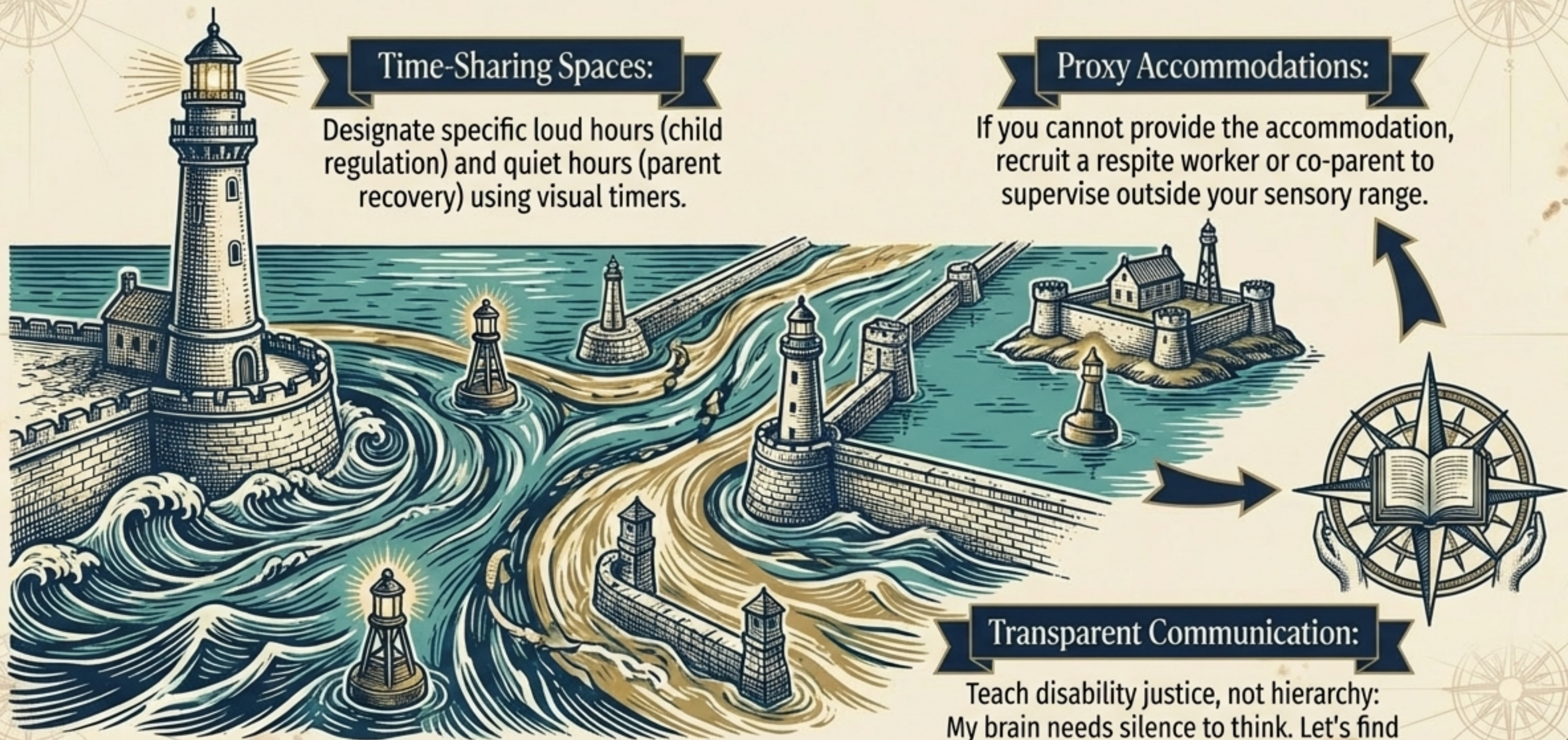
Designate specific loud hours (child regulation) and quiet hours (parent recovery) using visual timers.

## Proxy Accommodations:

If you cannot provide the accommodation, recruit a respite worker or co-parent to supervise outside your sensory range.

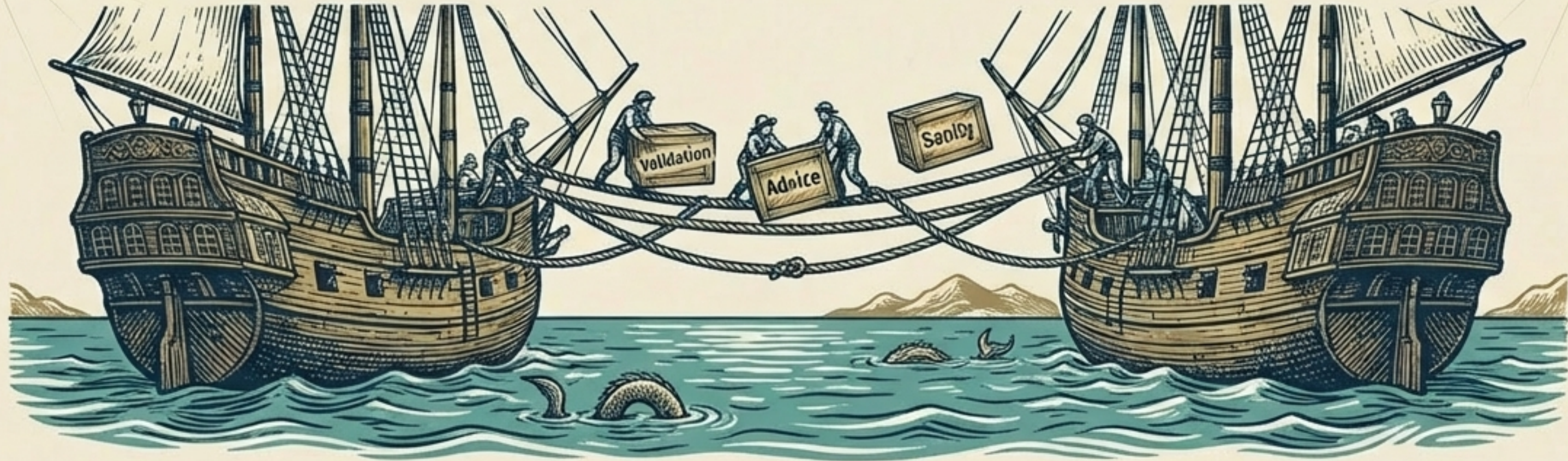
## Transparent Communication:

Teach disability justice, not hierarchy: My brain needs silence to think. Let's find a schedule that works for both of us.



# The Guild of Allies

**The Goal:** Finding your Neuro-Kin—parents who live on the same planet.



**In-Person Trench Mates:**  
Finding the parent who replies 'breathe and hydrate' instead of judging.  
**Hunting Grounds:** Therapy waiting rooms, Special Ed PTAs.



**Digital Safe Havens:** For socially exhausted ND parents, networking can feel like torture. Join Discord servers or niche Reddit groups where you can type instead of talk.

**Warning:** Vent the pattern, not the person. Protect your child's future digital privacy.



# Identifying the Respite Ranger

Parenting neurodivergent children is high-intensity labor. You must identify and train a reliable support person (a young relative, nursing student, or parent-swap ally).

## The Ranger's User Manual:

- ⚓ - **Triggers:** Exactly what sets off a meltdown (e.g., Don't use the word 'no' directly; say 'let's check the schedule').
- ⚓ - **Soothers:** Immediate regulation tools (e.g., Hand her the iPad and the weighted blanket).
- ⚓ - **Emergency Protocol:** Who to call first when escalation peaks.

# The Politics of Playdates

## ⚓ **The Pre-Playdate Script:**

Transparency without oversharing. She has ADHD and gets very excited. If she misses a cue, just tell her “pause and take a breath.” Does that sound okay?”

## ⚓ **Host on Your Turf:**

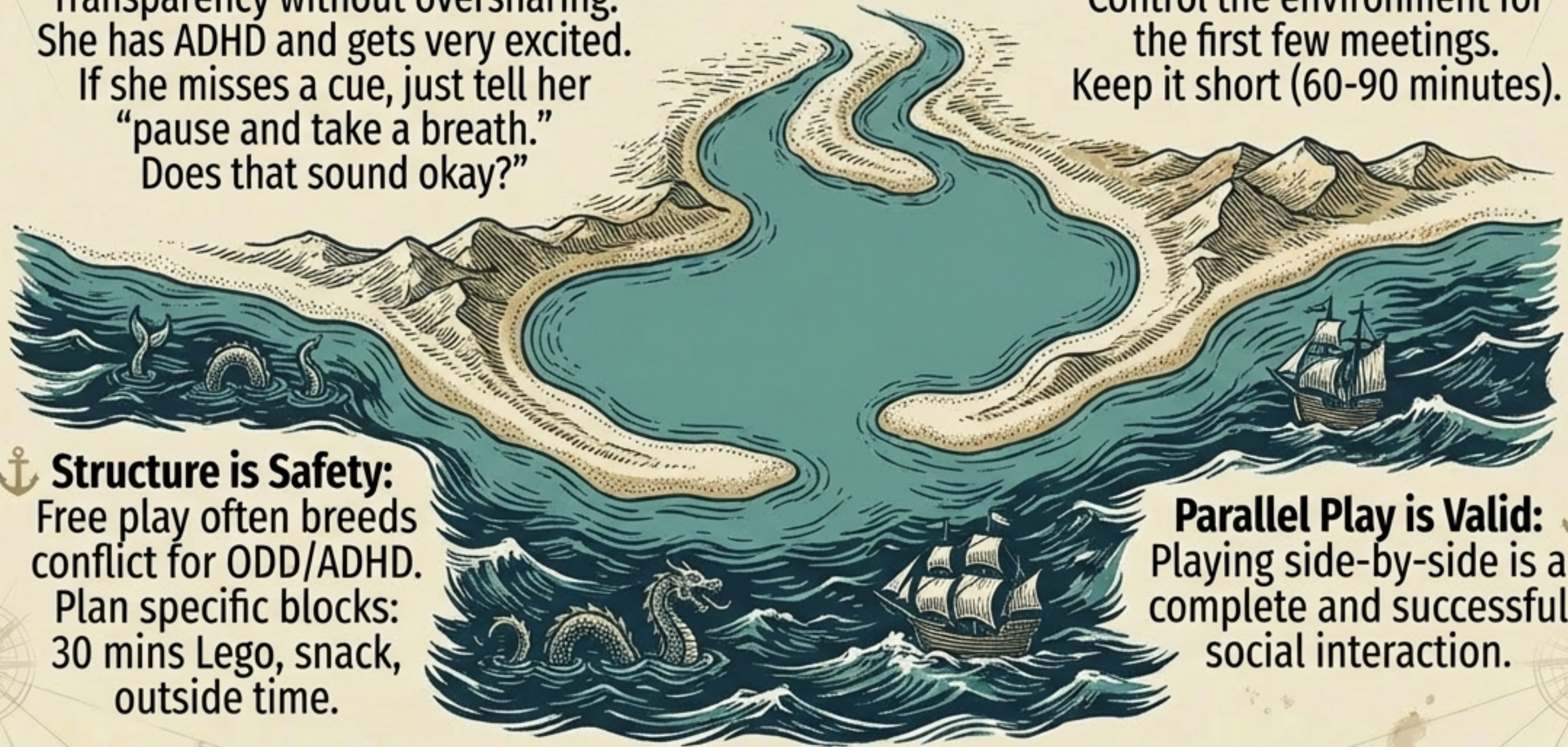
Control the environment for the first few meetings. Keep it short (60-90 minutes).

## ⚓ **Structure is Safety:**

Free play often breeds conflict for ODD/ADHD. Plan specific blocks: 30 mins Lego, snack, outside time.

## **Parallel Play is Valid:** ⚓

Playing side-by-side is a complete and successful social interaction.



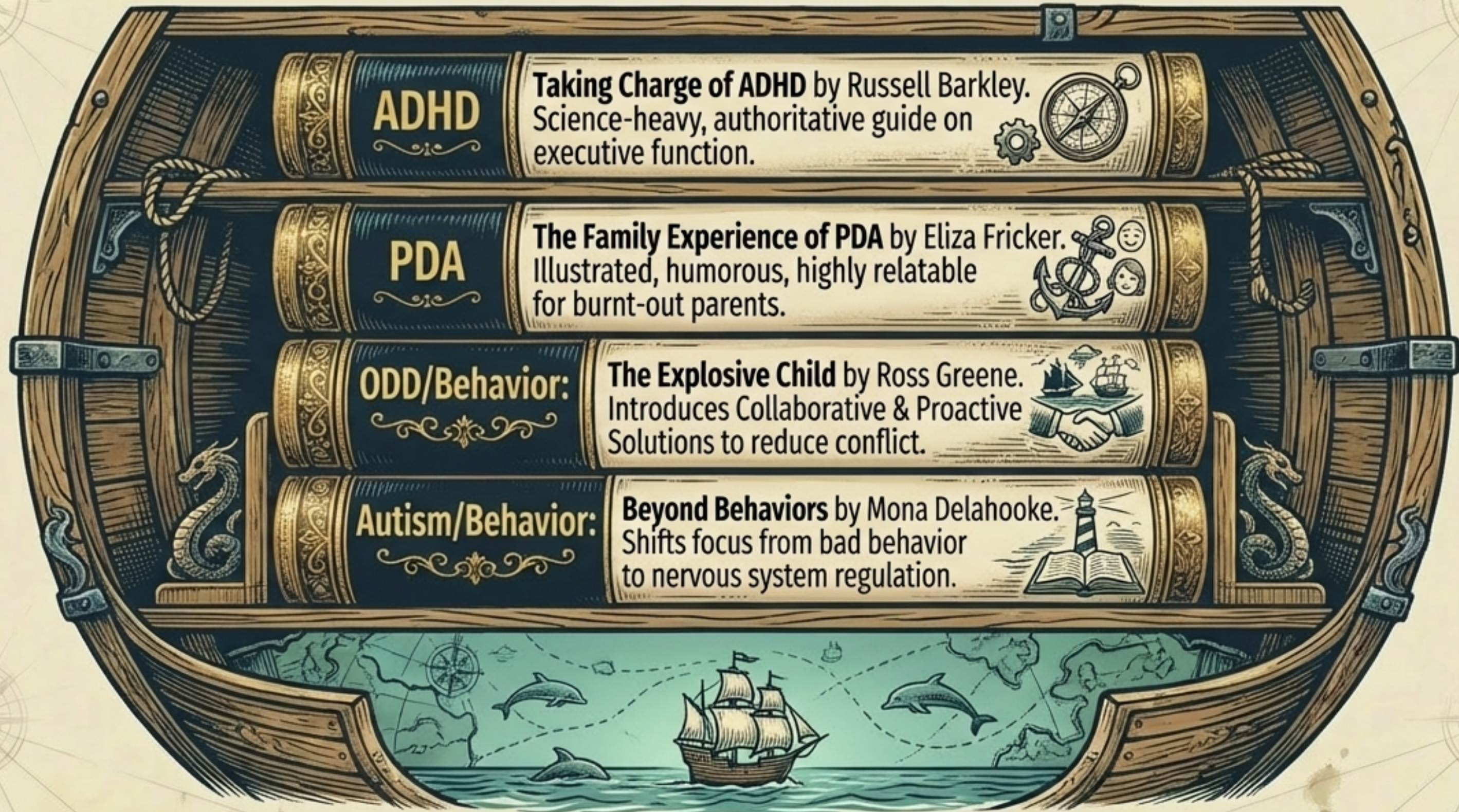
# The Ship's Library (Co-Parent Education)

**The Danger:** One parent becomes the Research Lead while the other lags. This breeds severe resentment and an imbalance of power.

- ⚓ - **Strategy 1: The Executive Summary.** Don't hand your busy co-parent a 300-page book. Highlight 3 pages or send a bulleted summary of a specific technique.
- ⚓ - **Strategy 2: Audio & Video.** Watch a webinar together (e.g., CHADD or PDA Society). A professional explaining a concept depersonalizes the advice.
- ⚓ - **Strategy 3: The One Thing Rule.** Agree to review just one article or video per month on your child's current primary struggle.



# Recommended Logs: The Co-Parent Syllabus



# Claiming the Open Ocean

The trauma of public meltdowns leads families to isolate in a bunker mentality. But hiding is not a long-term solution. Claim space in your community by mapping sensory-friendly geographies.



**Safe Harbors to Map:**  
Theaters:  
Sensory Friendly Films  
(lights up, sound down).

**Museums/Zoos:**  
Low-sensory early  
morning hours.

**Parks:**  
Fenced playgrounds  
(crucial for eloping risks).

**Co-Parenting Tip:**  
Never gatekeep resources. If you find  
a sensory-friendly barber, put it in the  
shared calendar immediately.

# The Kraken of Public Judgment

**The Reality:** The grocery store meltdown or the playground scolding are traumatic micro-aggressions that accumulate over time.

**The Reframe: The environment is the monster. Your child is just dysregulated.**

**The Mental Shift:** When the peanut gallery stares, remember that your only allegiance is to the dysregulated nervous system of the child in front of you.



# The Public Meltdown Protocol

## Step 1: The Shield

Turn your back to the crowd.  
Use your body to create a  
visual buffer between your  
child and the audience.



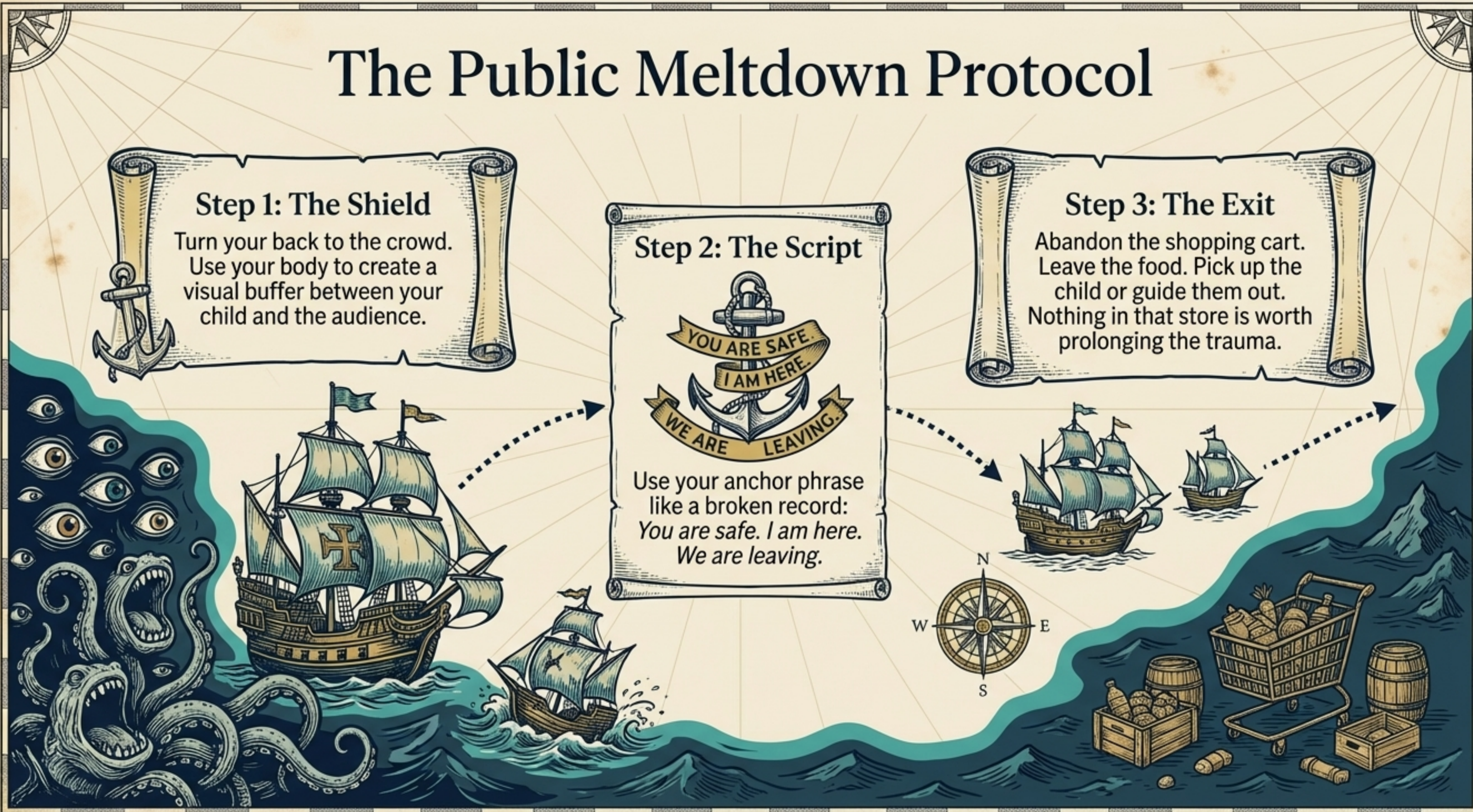
## Step 2: The Script



Use your anchor phrase  
like a broken record:  
*You are safe. I am here.*  
*We are leaving.*

## Step 3: The Exit

Abandon the shopping cart.  
Leave the food. Pick up the  
child or guide them out.  
Nothing in that store is worth  
prolonging the trauma.



# Navigational Warnings in the Storm

## Do Not Negotiate:

If you stop, I'll buy the candy.  
(This reinforces the behavior).

## Do Not Explain:

Do not apologize to staring strangers or explain the diagnosis. You owe them nothing. She's having a hard time, not giving me a hard time. Give us space.

## Do Not Ask Why:

Why are you doing this?  
(Their thinking brain is completely offline; they cannot answer you).

**Grounding Hack for Parents:** If you feel shame/rage rising, look only at your child's shoes. Narrowing your visual field blocks out the staring strangers.

# The Repair (After the Storm)



## The Post-Meltdown Protocol



**Silence:** Sit in silence in the car for 5 minutes. Allow the adrenaline dump to happen.



**Sensory Input:** Offer water or a crunchy snack (proprioceptive input helps nervous system regulation).



**The Grounding Phrase:**  
Say, That was really big. You're safe now.  
Do not lecture about behavior yet.



# Master Chart: Map Your Village

**Ring 3: Deep Ocean (Professionals)**  
Paid support (therapists,  
pediatricians, teachers, respite workers).

**Ring 2: Coastal Waters (Logistics)**  
The people who help with logistics  
or fun, but aren't in the trenches  
(friendly neighbors, regular  
babysitters, extended family).

**Ring 3: Deep Ocean (Professionals)**  
Paid support (therapists, pediatricians,  
teachers, respite workers).



**The Captain's Task:**  
Identify the gaps. Find one  
person you can move from  
Ring 2 to Ring 1 this week  
using a Diplomatic Dispatch.

# The Village is Built

The village isn't a mythical place you stumble upon; it is a secure harbor you construct, stone by stone.

It requires the mortar of vulnerability, the blueprints of education, and the fortifications of boundaries.



**The village isn't found—it's built, one boundary and one honest conversation at a time. You do not have to sail alone.**